



2GDS35 133x190L **

L23-A8 p



DATA SHEET

release. a - Revision 07-2014

Replace Z18-19 p

| Voltage | Frequency | Absorbed Power | Absorbed Current | Capacitor | Airflow | Rotation speed | Acoustic level | Rotation | Operational Temperature |
|---------|-----------|----------------|------------------|-----------|---------|----------------|----------------|----------|-------------------------|
| V | Hz | W | A | µF | m³/h | RPM | dBA | | Min/Max |
| 230 | 50 | 234 | 1,02 | 4,0 | 750 | 1905 | 56 | L | -20°C / +60°C |
| 230 | 60 | 246 | 1,08 | 4,0 | 615 | 2040 | 53 | L | -20°C / +40°C |
| 230 | 50 | | | | 441 CFM | | | | -4°F / 140°F |
| 230 | 60 | | | | 361 CFM | | | | -4°F / 104°F |



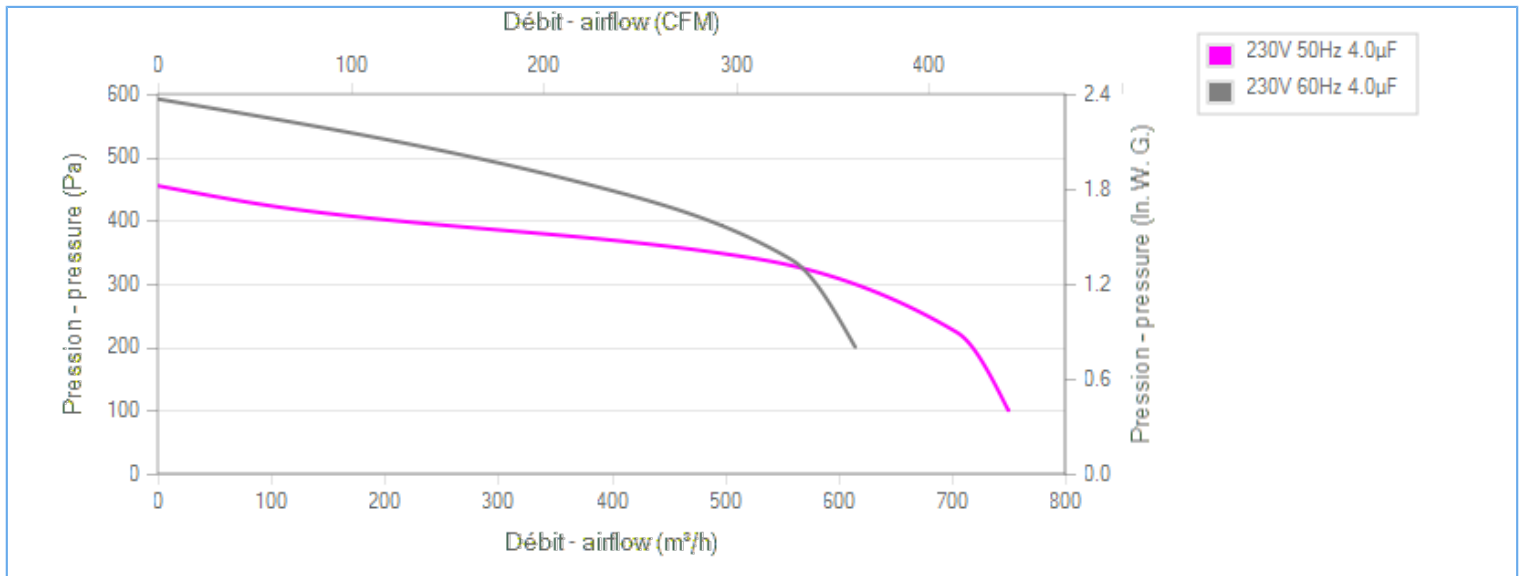
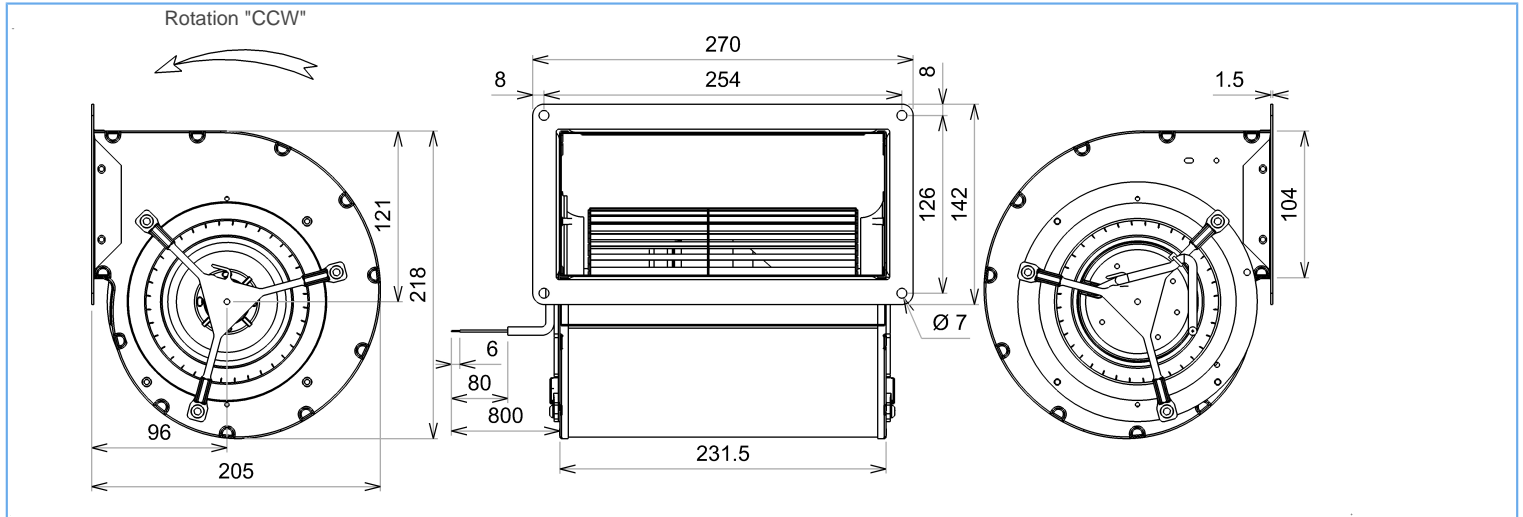
dBA : free blowing

ErP 2013

OK

ErP 2015

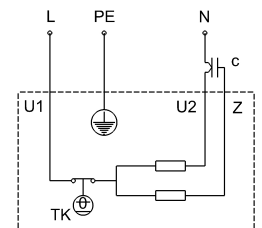
OK



Description

- .Weight : 4,0 Kg
- .Ball bearing
- .Class F, thermally protected
- .IP44 protection depending on installation and position as per EN60034-5
- .G2.5 balancing
- .Scroll housing : black paint
- .Galvanized steel impeller

U1 = Blue
 U2 = Black
 Z = Brown
 PE = Green/Yellow





DATA SHEET

release. a - Revision 07-2014

Replace Z18-19 p

Data in accordance to ErP directive

| | | |
|----------------|-------|----------------------------------|
| Voltage | 230 | V |
| Frequency | 50 | Hz |
| Power | 0,153 | kW ⁽¹⁾ |
| Airflow | 530 | m ³ /h ⁽¹⁾ |
| Pressure | 339 | Pa ⁽¹⁾ |
| Rotation speed | 2553 | RPM ⁽¹⁾ |

(1) at optimal efficiency point

| | Actual | Request 2013 | Request 2015 |
|-------------------------------|--------|--------------|--------------|
| Overall efficiency (η) | 32,6 | 25,5 | 32,5 |
| Efficiency grade | 44 | 37 | 44 |
| Installation category | A | | |
| Efficiency category | static | | |
| Variable speed drive | No | | |
| Specific ratio | 1,00 | | |

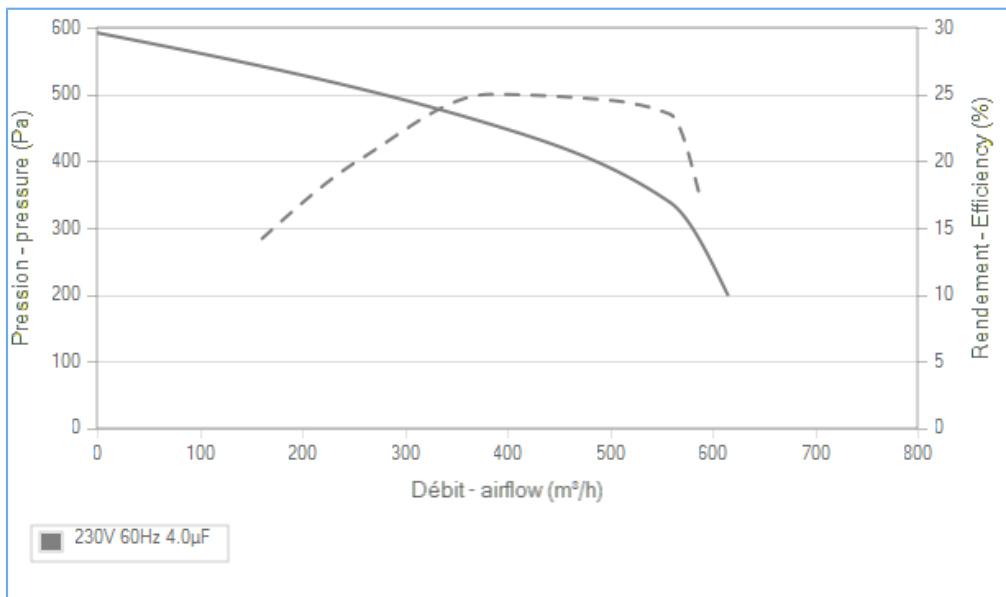
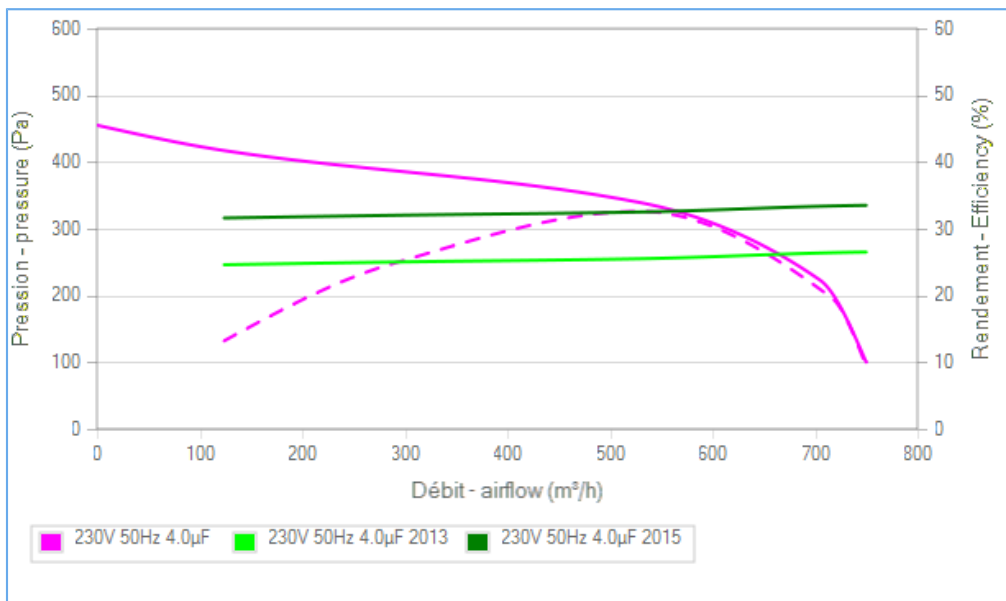
Designed for regular application according ErP directive EU 2009/125/EC

Accessories

| | |
|--------------------|-------|
| Capacitor for 50Hz | 19019 |
| Capacitor for 60Hz | 19019 |
| Finger guard | 21338 |
| Connector | 09145 |

Measurement setup

Contact ECOFIT



Non contractual document. All specifications are subject to change without prior notice. Picture for information only.

